

A photograph of a rusted, vintage car, possibly a truck or van, parked in a field. The car is the central focus, showing significant wear and tear, with a prominent rusted hood and a white-painted front bumper. The background is a soft-focus landscape of rolling hills under a warm, golden sunset sky. The overall mood is nostalgic and artistic.

To get you ready for your BTEC Level 3, Art Course, we have designed some short tasks. These will be based on gathering some exciting and personal images and ideas for you to start the course with.

Discover Local your Surroundings

Kickstart Summer Project

Summer Task Checklist

Task	Presentation Format	Tick when complete
Photographs of different locations	20 Photographs of all the different location listed. Present the best 10 and write a short explanation about each location. Mounted onto paper or into a sketchbook with neat, written titles/ explanations	
Continuous Line Drawing	Biro or Pencil on A4 drawing paper (NOT printer paper).	
Pencil Tonal detailed Drawing	A4 tonal detailed drawing. Use good quality drawing paper and a soft pencil 2b-4b	
Layered Media Drawing	3 different media on A4 drawing paper	
Own Choice Drawing	Chosen media on A3 or A4 drawing paper	

This work must be completed to the best of your ability. This summer work provides a vital transition onto your BTEC level 3 course. You will need to have your work ready to present during your first art lesson, so please ensure this work is with you from the first day back at Sixth Form. Please contact a member of staff listed below with any issues or concerns over the summer holiday.

Mrs M. Longmore–Spillet	mlongmorespillet@whitbyhs.cheshire.sch.uk
Mrs J Finnigan	jfinnigan@whitbyhs.cheshire.sch.uk

Summer Project Tasks

The theme for your BTEC Level 3 Art and Design Unit 3 and 12 Projects will be **“Your Local Surroundings”**. Your summer homework is to explore your surroundings in response to this theme and gather some research. You need to use the theme **“Your Local Surroundings”**, as a starting point for your ideas, but your work can develop from this into an area that really interests you.

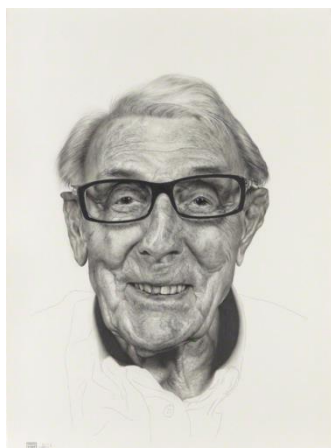
1. **Take photographs of objects, people and places that capture your theme. Take at least 20 photographs of each of the places/surrounding below.**

Select the ten best photos from each location and explain why these are relevant. Your explanation for each group of photos should say why you have chosen these specific viewpoints of the subject for your photos and how the photographs relates to your theme.

- Your bedroom
- Your home
- Your garden
- Your street/road that you live
- Your local shopping area
- The rural landscape near you (this could be a park/woods/ nearby country side)
- The urban /industrial landscape near you (this could be the refiners/business parks etc.)

2. **Create 4 observational studies, working from the imagery related to your theme from any of the photos:**

- Create a **continuous line drawing**, using pen or pencil. You must draw your object using a single line. In a continuous line drawing, you don't lift your hand from the paper, ever. Move your hand slowly and take your time. The final product should look as though it has been created from a single piece of string, with lines overlapping (see image to the left). Spend 15 minutes on one A4 Drawing, adding as much detail as possible. (15 min activity)



- Create a **tonal detailed drawing**. Really focus on the quality of the drawing especially the tonal shading. Ensure the shading is varied and please use a soft 2b-4b pencil. (45min)



- Choose an area of one of your photographs to draw from. You will **create a drawing using 3 different media**. First, block in areas of colour using watercolour, watered down acrylic or inks. Then add tone (highlights, shadows etc.) using pastels or pencil crayons. Finally, add fine details using pen or pencil. Spend 30 minutes on this drawing. (30 min activity)

- Finally, **choose the media you feel most comfortable drawing in**. Work directly from an object/landscape/person that relates to your theme, and spend an hour creating a drawing that reflects your abilities and your personality. (60 min activity)



