

2018 KS4 School Dashboard

for governors & school leaders

Produce custom dashboards at fftaspire.org

The Whitby High School

LA Cheshire West and Chester DFE 8964167 Produced November 2018 Version 1

What it is

Seven easy-to-use reports that help governors and school leaders to evaluate school performance using the latest 2018 DFE school performance indicators.

What it tells you

- What are the strengths and areas for improvement in your school?
- How does attainment and pupil progress compare to the national average over the last three years?
- How are you performing in different subjects?
- Do you have any under-performing groups of pupils?
- How might the context of your school affect performance?
- How does pupil attendance compare to the national average?

Important information for analysing 2018 results

Reformed GCSEs (based on a 9-1 grade scale) are included from 2017 onwards where applicable. Grade 5 represents a 'strong' pass; grade 4 a 'standard' pass.

To provide trends over time and context for the 2017 and 2018 results, FFT converts pupil results from previous years to the new 9-1 grades. The blue dotted line on trend charts highlights the change.

About the data shown

1 2 3

Actual results

Actual results for your school, using a range of measures such as averages and thresholds.



Gauges

These display headline indicators and whether actual results and pupils' progress are in line with, or significantly above or below, the national average.

ESTIMATED

← → 1 2 3

Pupil progress

The value added progress that your pupils have made from one key stage to the next. FFT compares your actual results to the estimated results based on the progress of similar pupils nationally.



Statistical significance

Green plus signs and red minus signs highlight where either actual results or pupils' progress is significantly above or below the national average.



Trends

The dashboard analyses school performance over 3-5 years. Any significant year-on-year improvement is highlighted using an up arrow. Significant declines in performance are highlighted with a down arrow.



Strengths & weaknesses

These highlight key pupil groups and subjects where progress is above or below the national average.

Working in partnership with



Data sources

Generated from FFT Aspire which includes data sourced from the DfE (National Pupil Database) and data calculated by FFT. FFT is accredited as a DfE supplier to receive early access to ASP data. Headline performance indicators will be consistent with the DfE School Performance Tables and ASP.

Overview

KS4 Attainment 2018 · Actual results

262 pupils

Attainment 8 (Overall)

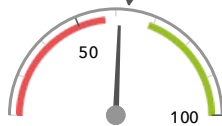
4.7



In line with the national average (4.5) ◀

% English & Maths (Grade 4+)

61%



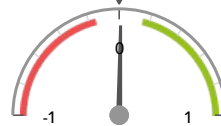
In line with the national average (63%) ◀

KS4 Progress 2018 · Value Added

258 matched pupils

Progress 8 (Overall)

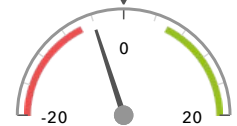
+0.01 ↓



In line with the national average (0) ◀

% English & Maths (Grade 4+)

-4%



In line with the national average (0%) ◀

KS4 higher and lower performing pupil groups 2018

	Higher performing	Lower performing
Overall achievement pupil progress	Summer Term (94) + Not FSM (ever) (191) ↓ Middle attainers (128)	FSM (20) FSM (in last 6 years) (43) - FSM (ever) (66) -
English pupil progress		FSM (in last 6 years) (43) - FSM (20) FSM (ever) (66) -
Mathematics pupil progress	Summer Term (94) ↑ SEN Support (39) Male (131)	FSM (20) - FSM (in last 6 years) (43) - FSM (ever) (66) -
Subjects pupil progress	Information Technology GCSE (96) + Chemistry GCSE (21) + Engineering Studies Non-GCSE (80) + Catering Studies Non-GCSE (37) + ↑ Multimedia Non-GCSE (10)	Drama GCSE (25) - ↓ Small Business Non-GCSE (27) - D&T Food Technology GCSE (41) - Creative Writing GCSE (16) - D&T Graphic Products GCSE (30) -

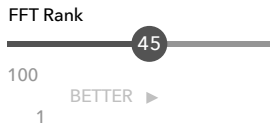
Attainment & progress

KS4 Attainment 2018

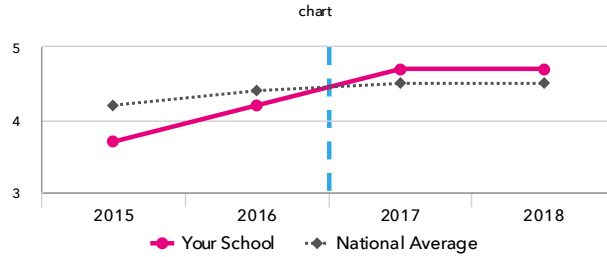
262 pupils

Attainment 8 (Overall)

4.7



In line with the national average (4.5)

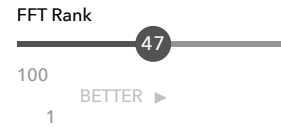


KS4 Progress 2018

258 matched pupils

Progress 8 (Overall)

+0.01 ↓



In line with the national average (0)

% English & Maths (Grade 4+)

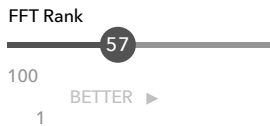
-4%



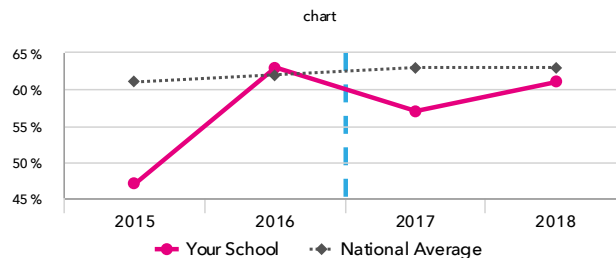
In line with the national average (0%)

% English & Maths (Grade 4+)

61%



In line with the national average (63%)



KS4 performance summary

	Actual results			Pupil progress		
	2016	2017	2018	2016	2017	2018
Number of Pupils / % Matched	262	246	262	98%	97%	98%
Attainment / Progress 8 (Overall)	4.2 ↑	4.7 ↑	4.7	-0.29 ↗	+0.35 ↗	+0.01 ↓
Attainment / Progress 8 (English)	4.0 ↘	4.5 ↗	4.6	-0.74 ↘	-0.22 ↗	-0.37 ↘
Attainment / Progress 8 (Maths)	4.1	4.1 ↘	4.5	-0.30 ↘	-0.01 ↑	-0.06
Attainment / Progress 8 (Ebacc)	3.5 ↗	3.9 ↑	4.3 ↑	-0.56 ↗	+0.10 ↑	-0.14 ↓
Attainment / Progress 8 (Open)	5.1 ↗	6.0 ↗	5.2 ↘	+0.29 ↗	+1.22 ↗	+0.42 ↘
% English & Maths (Grade 4+)	63% ↑	57%	61%	-2% ↑	-1%	-4%
% English & Maths (Grade 5+)	-	34% ↘	36% ↘	-	+0%	-6% ↘
% Ebacc (Grade 4+)	29%	32% ↗	36% ↗	+5% ↗	+14% ↗	+12% ↗
% Ebacc (Grade 5+)	-	28% ↗	23% ↗	-	+13% ↗	+6% ↗
% 5+ GCSEs (Grade 7+)	8% ↘	8% ↘	10% ↘	-8% ↘	-3% ↑	-5% ↘
Average entries per pupil	-	10.8 ↗	9.2 ↗	-	+1.4 ↗	+0.8 ↘
Average entries per pupil (GCSE only)	-	9.3 ↗	8.1 ↗	-	+0.6 ↗	+0.2 ↘
% Pupils taking 3 single sciences	-	8% ↘	8% ↘	-	-12% ↘	-19% ↘

Pupil groups

KS4 Pupil groups performance 2018

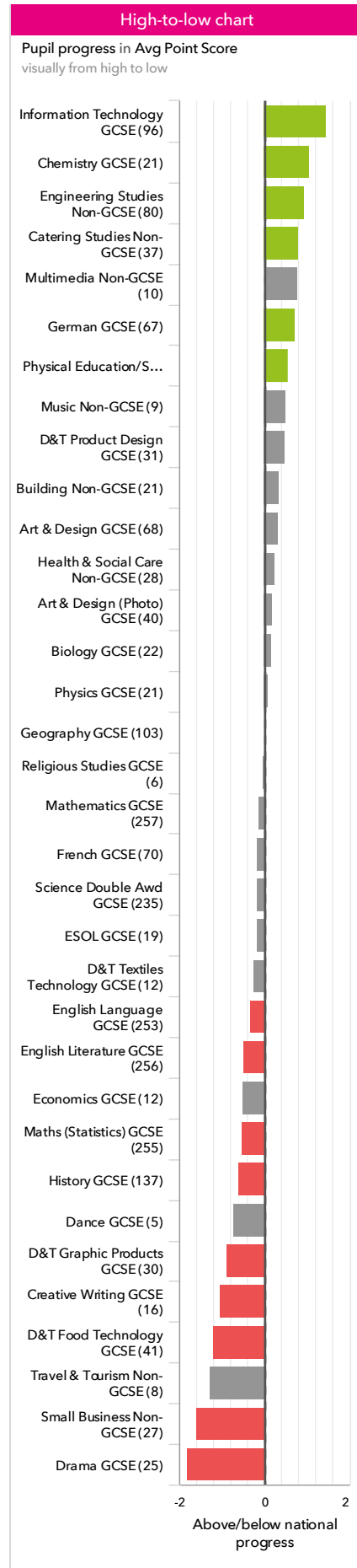
	Pupils	Actual results			Pupil progress			
		Attainment 8 (Overall)	% English & Maths (Grade 4+)	% Ebacc (Grade 4+)	Progress 8 (Overall)	% English & Maths (Grade 4+)	% Ebacc (Grade 4+)	
Summary	All Pupils	262	4.7	61%	36% +	+0.01 ↓	-4%	+12% +
Gender	Male	133	4.5	56%	34% +	+0.02 ↓	-4%	+17% +
	Female	129	4.8	67%	38% +	-0.01 ↓	-5%	+6%
DFE Prior Attainment	Higher attainers	97	5.9	94%	72% +	-0.16 ↓	-1%	+25% +
	Middle attainers	128	4.3	50%	16%	+0.14	-6%	+5%
	Lower attainers	33	2.6 ↓	3%	3%	-0.01 ↓	-10%	+2%
Pupil Premium	FSM (in last 6 years)	43	4.2 +	49%	28% +	-0.41 -	-16% -	+3%
	Not FSM (in last 6 years)	217	4.8	64% -	38% +	+0.11 ↓	-2%	+14% +
FSM	FSM	20	4.0	40%	25% +	-0.41	-27% -	+1%
	Not FSM	240	4.7	63%	37% +	+0.06 ↓	-2%	+13% +
FSM Ever	FSM (ever)	66	4.3 +	53%	30% +	-0.36 -	-11%	+6%
	Not FSM (ever)	194	4.8	64% -	38% +	+0.15 ↓	-1%	+14% +
Term of Birth	Autumn Term	91	4.6	62%	35% +	-0.14 ↓	-9% ↓	+10% +
	Spring Term	77	4.5	56%	32%	-0.15 ↓	-7%	+7%
	Summer Term	94	4.8	65% ↑	39% + ↑	+0.28 +	+2%	+18% +
SEN Group	SEN Support	39	3.5	31%	10%	-0.05	-6%	+2%
	EHC Plan	7	1.8	0%	0%	-1.44 -	-22%	-3%
	No SEN	214	5.0	69%	42% +	+0.08 ↓	-3%	+14% +
EAL	First language not English	6	4.2	50%	50%	+0.61	+5%	+29%
	First language English	256	4.7	61%	36% +	-0.00 ↓	-5%	+11% +
Mobility	Joined in Y10 or Y11	1	1.4	0%	0%	-1.73	-13%	-2%
	Joined before Y10	261	4.7	61%	36% +	+0.01 ↓	-4%	+12% +
Ethnicity	White	246	4.7	62%	36% +	+0.01 ↓	-4%	+11% +
	Black Caribbean	3	4.7	33%	33%	-0.27	-45%	+3%
	Black African	2	4.8	50%	50%	-0.02	-37%	+20%
	Other Asian	1	6.5	100%	100%	+1.96	+35%	+92%
	Chinese	3	5.1	67%	67%	+1.29	+20%	+58%
	Any Other	3	3.1	33%	0%	-0.62	-16%	-8%
	Unknown	2	3.4	50%	50%	-0.08	-8%	-1%
	No Ethnicity Data	2	1.5	50%	0%	-3.70	-93%	-28%



Subjects

KS4 subject performance 2018

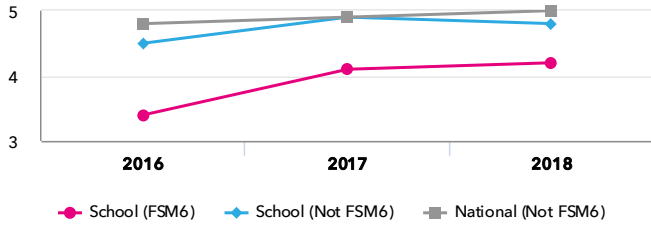
			Actual results			Pupil progress		
Pupils			Avg Point Score	% Grade 4+	% Grade 7+	Avg Point Score	% Grade 4+	% Grade 7+
English and maths	English Language GCSE	257	4.4 ⬇️	64%	9% ⬇️	-0.33 ⬇️	-8% ⬇️	-8% ⬇️
	English Literature GCSE	260	4.2 ⬆️	62% ⬇️	10% ⬆️	-0.49 ⬇️	-10% ⬇️	-8% ⬇️
	Mathematics GCSE	261	4.5	72% ⬆️	15% ⬇️	-0.13	+1%	-4%
	Maths (Statistics) GCSE	259	3.7 ⬇️	54% ⬇️	6% ⬇️	-0.54 ⬇️	-4%	-8% ⬇️
Ebacc Subjects	Biology GCSE	22	6.7 ⬆️	95%	59%	+0.16	-0%	+8%
	Chemistry GCSE	21	7.7 ⬆️	100%	86% ⬆️	+1.08 ⬆️	+4%	+31% ⬆️
	French GCSE	72	4.8	71%	14%	-0.15 ⬆️	-2%	-10%
	Geography GCSE	106	4.5 ⬆️	62%	16%	-0.00	-2%	-3%
	German GCSE	68	5.2	82%	24%	+0.72 ⬆️	+15% ⬆️	+9% ⬆️
	History GCSE	137	3.8 ⬇️	55% ⬇️	13% ⬇️	-0.61 ⬇️	-6%	-9% ⬇️
	Modern Greek GCSE	1	8.5	100%	100%	-	-	-
	Physics GCSE	21	6.8 ⬆️	100%	57%	+0.08	+3%	+1%
Science Double Awd GCSE	238	4.2	62%	9%	-0.16	-4%	-5% ⬇️	
Other High Value Subjects	Art & Design (Photo) GCSE	40	5.0	73%	18%	+0.20	-1%	+2%
	Art & Design GCSE	70	5.4 ⬆️	89% ⬆️	24% ⬆️	+0.31	+11% ⬆️	+1%
	Building Non-GCSE	21	4.7	95%	10%	+0.35	+9%	-3%
	Catering Studies Non-GCSE	37	5.7 ⬆️	100% ⬆️	35% ⬆️	+0.81 ⬆️	+14% ⬆️	+13%
	Creative Writing GCSE	16	5.0	81%	25%	-1.04 ⬇️	+1%	-31% ⬇️
	D&T Food Technology GCSE	41	3.1 ⬇️	34% ⬇️	0% ⬇️	-1.21 ⬇️	-28% ⬇️	-13% ⬇️
	D&T Graphic Products GCSE	32	3.6	56%	6%	-0.87 ⬇️	-14%	-18% ⬇️
	D&T Product Design GCSE	31	5.0 ⬆️	68%	39% ⬆️	+0.49	+1%	+18% ⬆️
	D&T Textiles Technology GCSE	13	4.6 ⬆️	92%	8%	-0.25	+11%	-15%
	Dance GCSE	5	4.0	60%	0%	-0.71	-9%	-19%
	Drama GCSE	25	3.3 ⬇️	40% ⬇️	0% ⬇️	-1.82 ⬇️	-36% ⬇️	-23% ⬇️
	Economics GCSE	12	4.6 ⬆️	83%	8%	-0.51	+2%	-21%
	Engineering Studies Non-GCSE	81	5.9 ⬆️	96% ⬆️	41% ⬆️	+0.94 ⬆️	+8% ⬆️	+16% ⬆️
	ESOL GCSE	21	3.3	57%	10%	-0.17	+2%	+6%
	Health & Social Care Non-GCSE	28	5.3	100% ⬆️	18% ⬆️	+0.25 ⬆️	+12%	-10% ⬆️
	Information Technology GCSE	97	6.1 ⬆️	97% ⬆️	54% ⬆️	+1.48 ⬆️	+15% ⬆️	+33% ⬆️
	Multimedia Non-GCSE	10	6.4 ⬆️	100%	70% ⬆️	+0.77	+8%	+31%
	Music Non-GCSE	9	6.0	100%	33%	+0.51	+9%	+3%
	Physical Education/Sport Studies Non-GCSE	34	6.2 ⬆️	100% ⬆️	41% ⬆️	+0.56 ⬆️	+7%	+5%
	Religious Studies GCSE	6	5.8	100%	50%	-0.02	+20%	+5%
Small Business Non-GCSE	27	2.9 ⬇️	56%	0% ⬇️	-1.59 ⬇️	-27% ⬇️	-23% ⬇️	
Travel & Tourism Non-GCSE	8	2.4 ⬇️	38%	0%	-1.28 ⬇️	-46% ⬇️	-22%	



Disadvantaged pupils

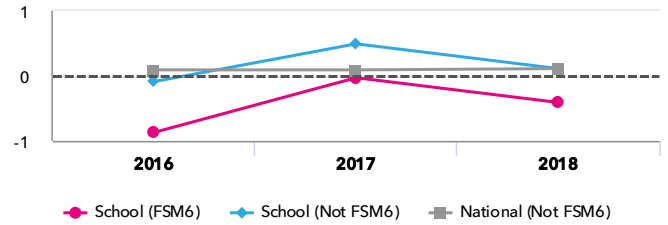
KS4 attainment for disadvantaged pupils 2018

Attainment 8 (Overall)

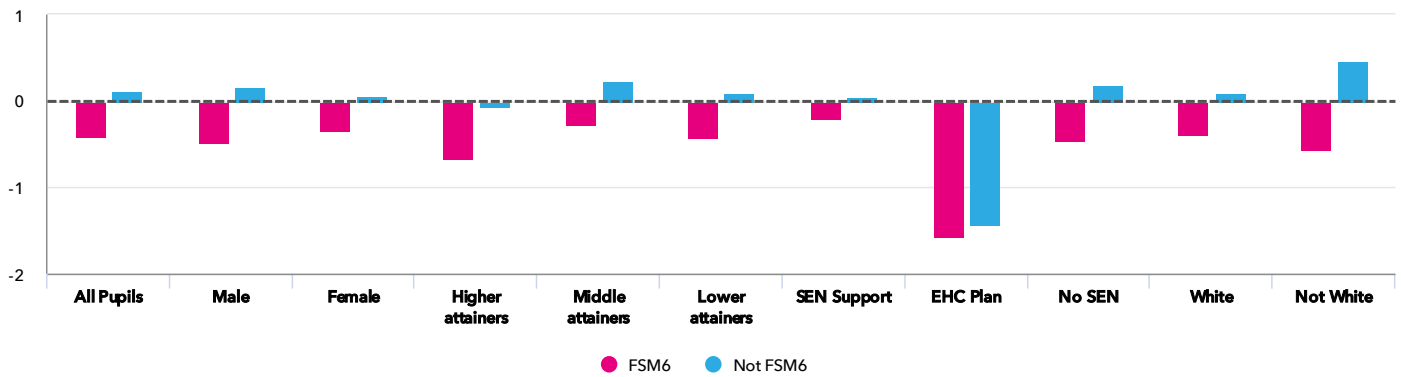


KS4 progress for disadvantaged pupils 2018

Progress 8 (Overall)



Progress gap Progress 8 (Overall)

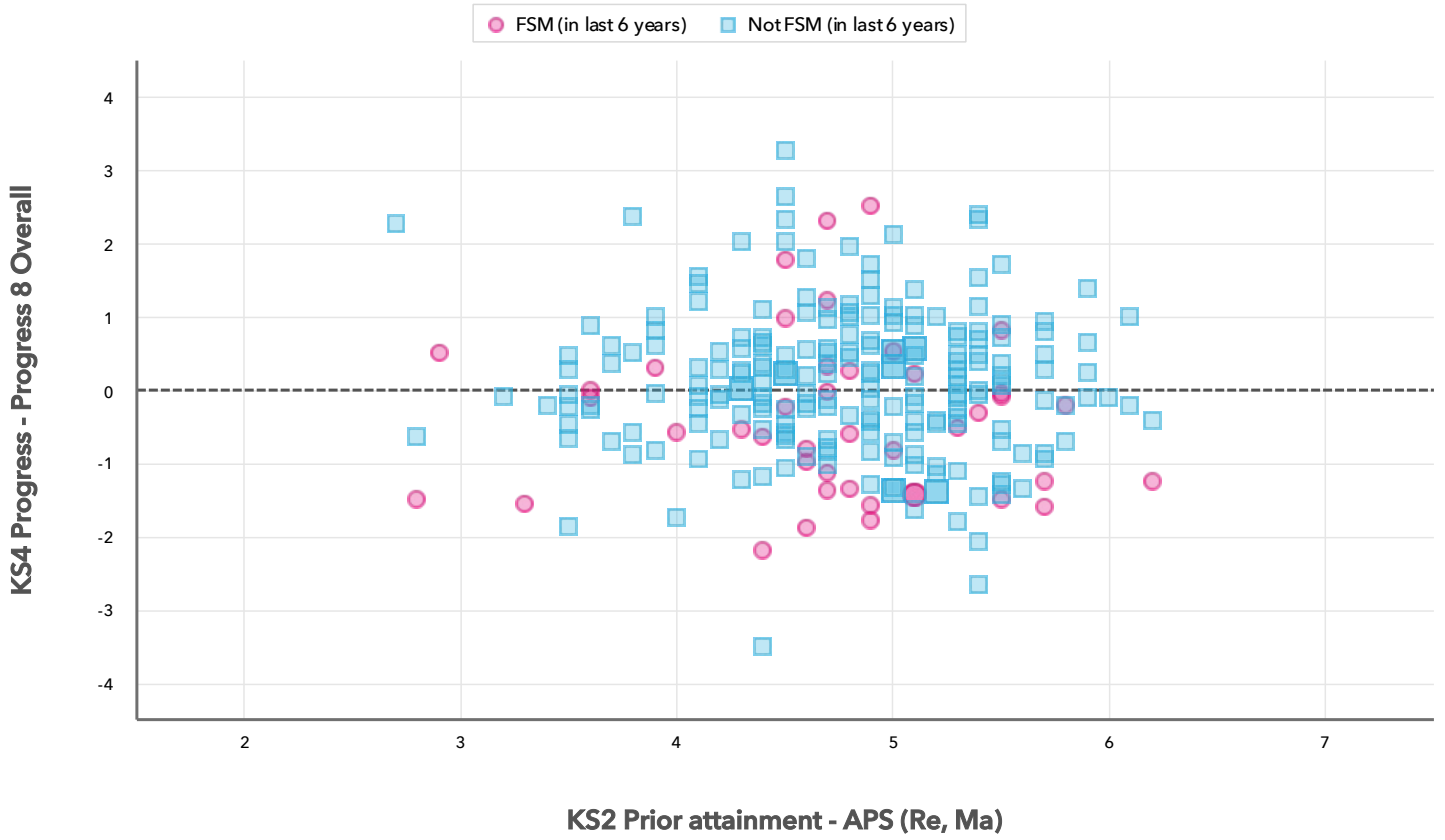


Attainment & progress

Pupils	Attainment			Progress					
	Attainment 8 (Overall)			Progress 8 (Overall)					
	FSM6	Not FSM6	Gap	FSM6	Not FSM6	Gap			
Summary	All Pupils	43	217	4.2 +	4.8	-0.6	-0.41 -	0.11 ↓	-0.52
Gender	Male	21	111	3.5	4.7	-1.2	-0.48	0.16	-0.64
	Female	22	106	4.9	4.8	0.1	-0.33	0.06	-0.39
DFE Prior Attainment	Higher attainers	13	83	5.7	6	-0.3	-0.66	-0.04	-0.62
	Middle attainers	23	105	4	4.3	-0.3	-0.26	0.23	-0.49
	Lower attainers	7	26	2.1	2.7	-0.6	-0.42	0.1	-0.52
SEN Group	SEN Support	11	28	3.1	3.6	-0.5	-0.19	0.01	-0.2
	EHC Plan	1	6	0.7	2	-1.3	-1.56	-1.42	-0.14
	No SEN	31	183	4.7	5.1	-0.4	-0.45	0.18	-0.63
Ethnic Group	White	40	206	4.3	4.8	-0.5	-0.39	0.09	-0.48
	Not White	3	11	3.6	4.6	-1	-0.56	0.47	-1.03

Scatterplot

KS4 Pupil scatterplot 2018 262 pupils highlighted by Pupil Premium



Context

Context · Year 11 · 2017 / 2018

		Pupils	Proportion	
			School	National
Summary	All Pupils	262	100%	100%
Gender	Male	133	51%	51%
	Female	129	49%	49%
DFE Prior Attainment	Higher attainers	97	37%	39%
	Middle attainers	128	49%	42%
	Lower attainers	33	13%	14%
Pupil Premium	FSM (in last 6 years)	43	16%	26%
	Not FSM (in last 6 years)	217	83%	72%
FSM	FSM	20	8%	13%
	Not FSM	240	92%	86%
FSM Ever	FSM (ever)	66	25%	33%
	Not FSM (ever)	194	74%	66%
Term of Birth	Autumn Term	91	35%	33%
	Spring Term	77	29%	32%
	Summer Term	94	36%	34%
SEN Group	SEN Support	39	15%	12%
	EHC Plan	7	3%	4%
	No SEN	214	82%	84%
EAL	First language not English	6	2%	16%
	First language English	256	98%	84%
Mobility	Joined in Y10 or Y11	1	0%	4%
	Joined before Y10	261	100%	96%
Ethnicity	White	246	94%	75%
	Black Caribbean	3	1%	3%
	Black African	2	1%	5%
	Other Asian	1	0%	3%
	Chinese	3	1%	0%
	Any Other	3	1%	3%
	Unknown	2	1%	1%
	No Ethnicity Data	2	1%	1%

Absence · Year 11 · 2017 / 2018

		Pupils	Absence		Persistent absentees	
			School	National	School	National
Summary	All Pupils	262	6%	6%	13%	15%
Gender	Male	133	5%	6%	11%	15%
	Female	129	6%	6%	16%	15%
DFE Prior Attainment	Higher attainers	97	4%	5%	8%	9%
	Middle attainers	128	6%	7%	16%	17%
	Lower attainers	33	9%	9%	18%	25%
Pupil Premium	FSM (in last 6 years)	43	9%	10%	30%	28%
	Not FSM (in last 6 years)	217	5%	5%	10%	10%
FSM	FSM	20	12%	11%	40%	32%
	Not FSM	240	5%	5%	11%	12%
FSM Ever	FSM (ever)	66	8%	9%	26%	26%
	Not FSM (ever)	194	5%	5%	9%	9%
Term of Birth	Autumn Term	91	6%	6%	15%	16%
	Spring Term	77	8%	6%	18%	15%
	Summer Term	94	5%	6%	9%	14%
SEN Group	SEN Support	39	8%	11%	23%	30%
	EHC Plan	7	10%	11%	29%	29%
	No SEN	214	5%	5%	11%	12%
EAL	First language not English	6	4%	5%	17%	11%
	First language English	256	6%	6%	13%	16%
Mobility	Joined in Y10 or Y11	1	39%	17%	100%	50%
	Joined before Y10	261	6%	6%	13%	14%
Ethnicity	White	246	6%	6%	12%	16%
	Black Caribbean	3	13%	7%	67%	21%
	Black African	2	7%	4%	50%	8%
	Other Asian	1	0%	5%	0%	10%
	Chinese	3	1%	2%	0%	3%
	Any Other	3	16%	6%	33%	13%
	Unknown	2	7%	8%	50%	21%
	No Ethnicity Data	2	0%	24%	0%	73%